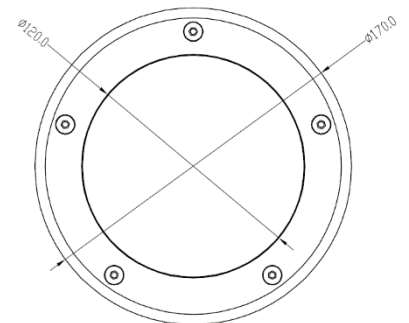
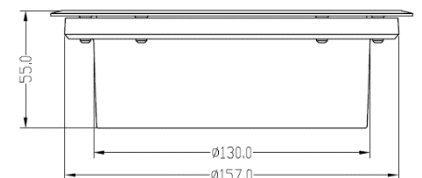


LED Solar Inground Light



Specification

- 10 Hours lighting time since fully charged
- Built-in full size solar panel with high charging efficiency
- Stainless steel housing with firm glass, can load 1000kg weight
- IP68 Protection Grade
- 2000mAh, 3.7V Li-ion battery



Model	Size (mm)	Solar Panel	Charging time	Lumen	CCT
UGLS15	$\phi 170 \times H55$	1W, 5.5V	11hr in bright sunlight	30lm	2700K/3000K/4000K/6500K